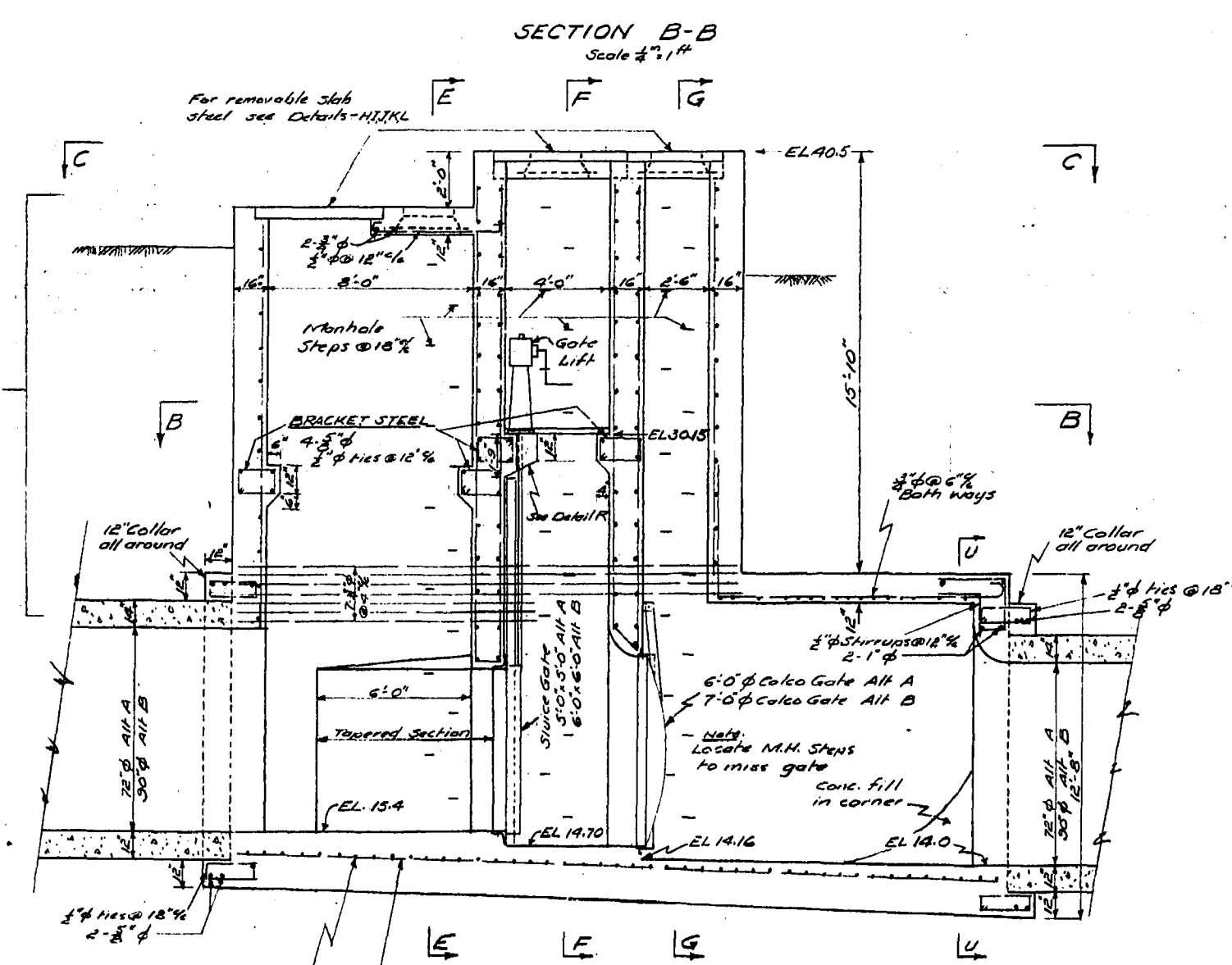
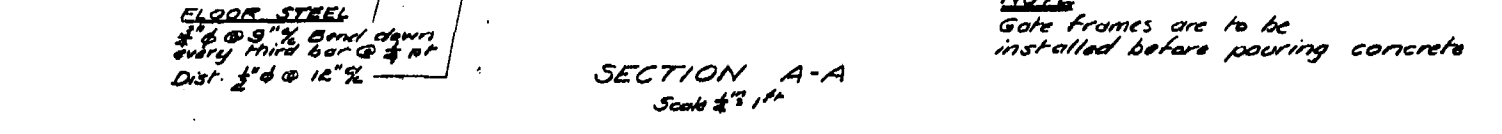


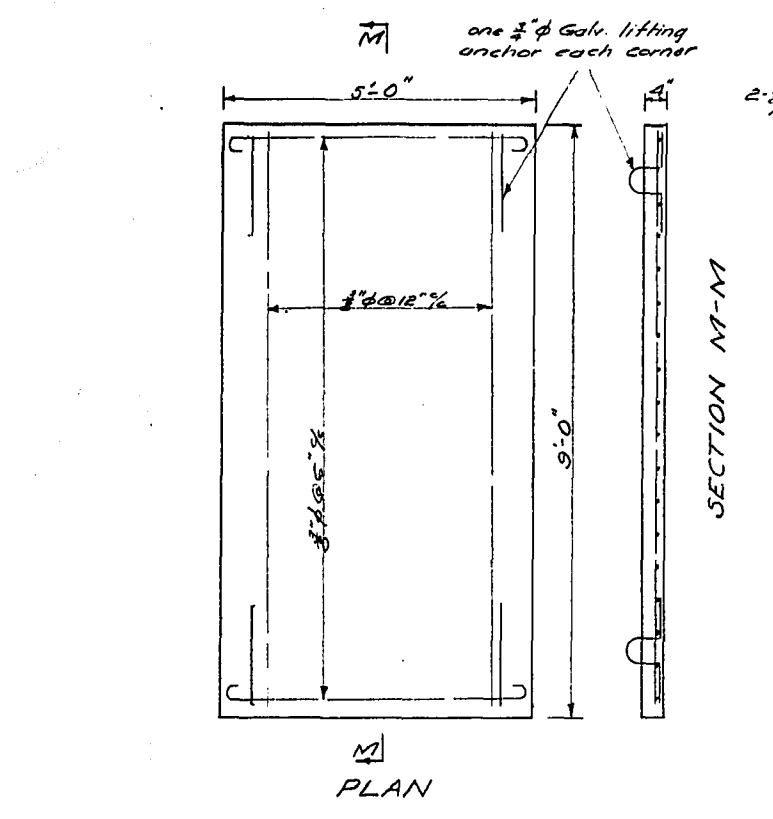
SECTION C-C
Scale 1/4" = 1'-0"



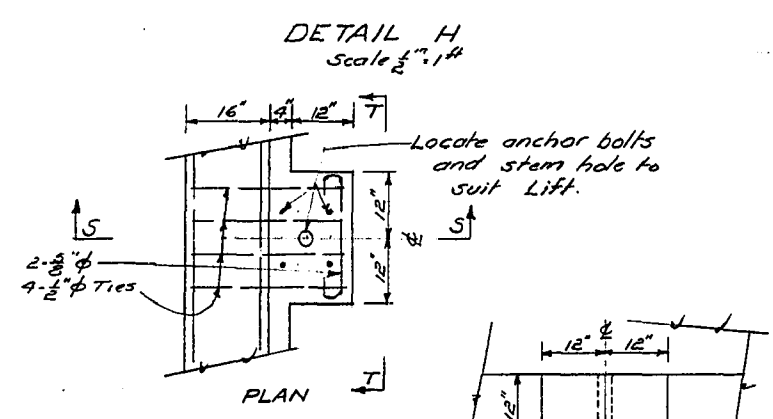
SECTION B-B
Scale 1/4" = 1'-0"



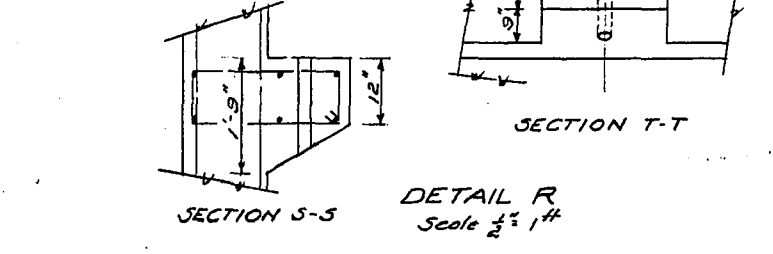
SECTION A-A
Scale 1/8" = 1'-0"



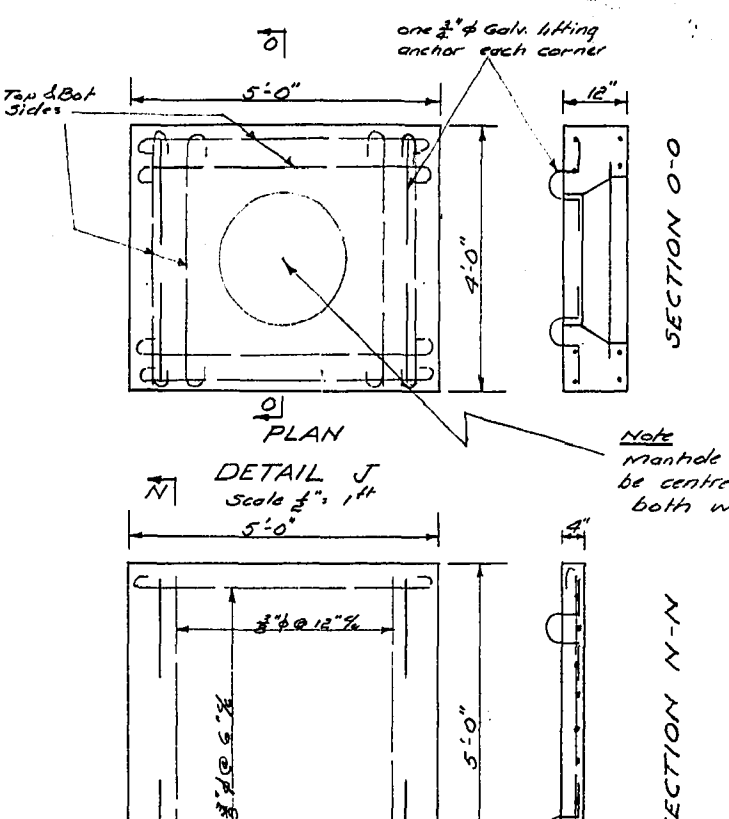
SECTION M-M



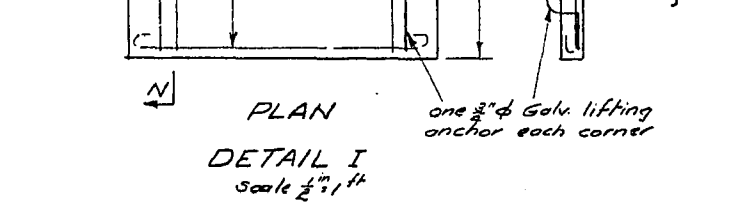
DETAIL H
Scale 1/4" = 1'-0"



SECTION S-S
Scale 1/4" = 1'-0"



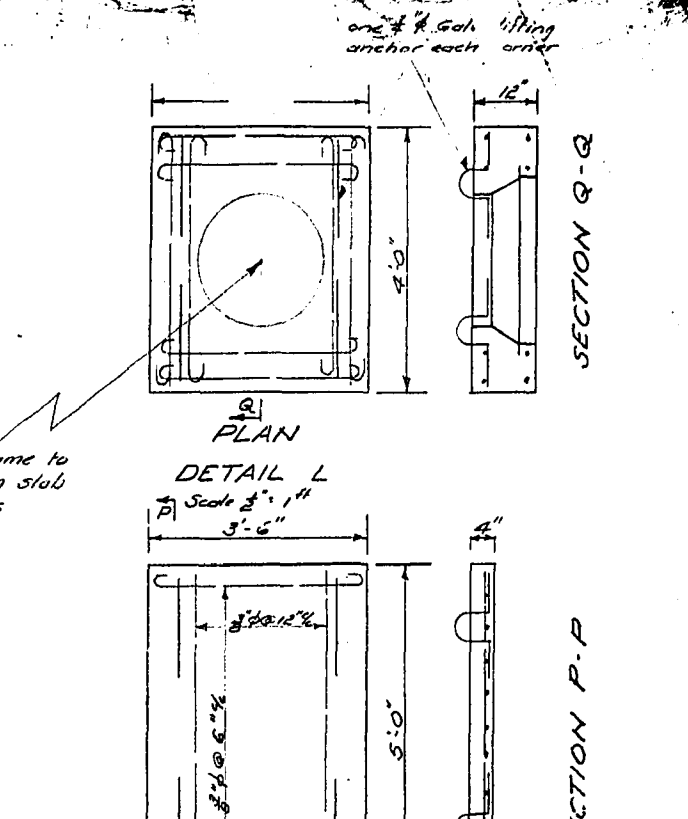
SECTION O-O



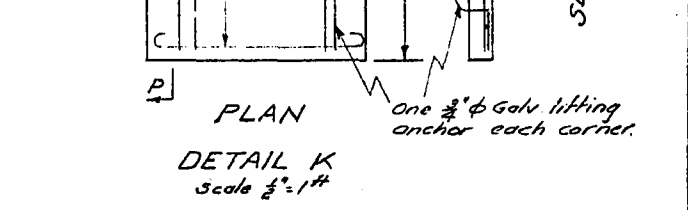
DETAIL J
Scale 1/4" = 1'-0"



DETAIL I
Scale 1/4" = 1'-0"



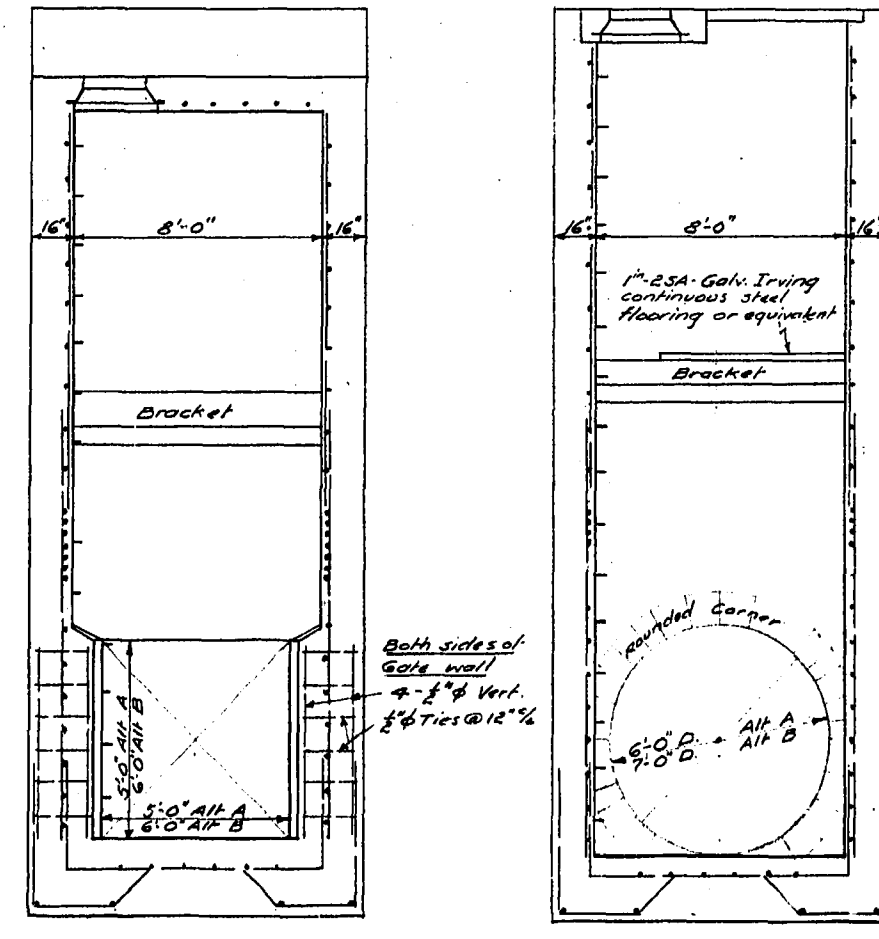
SECTION Q-Q



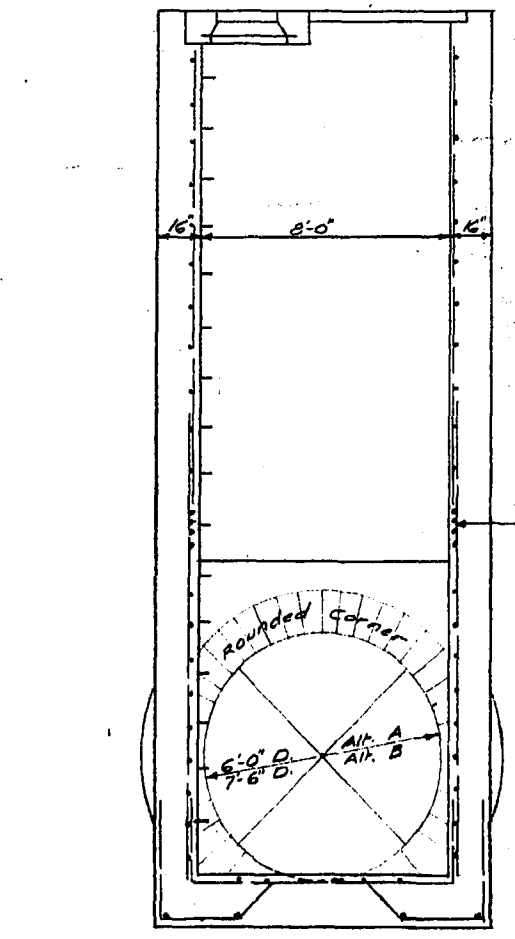
DETAIL L
Scale 1/4" = 1'-0"



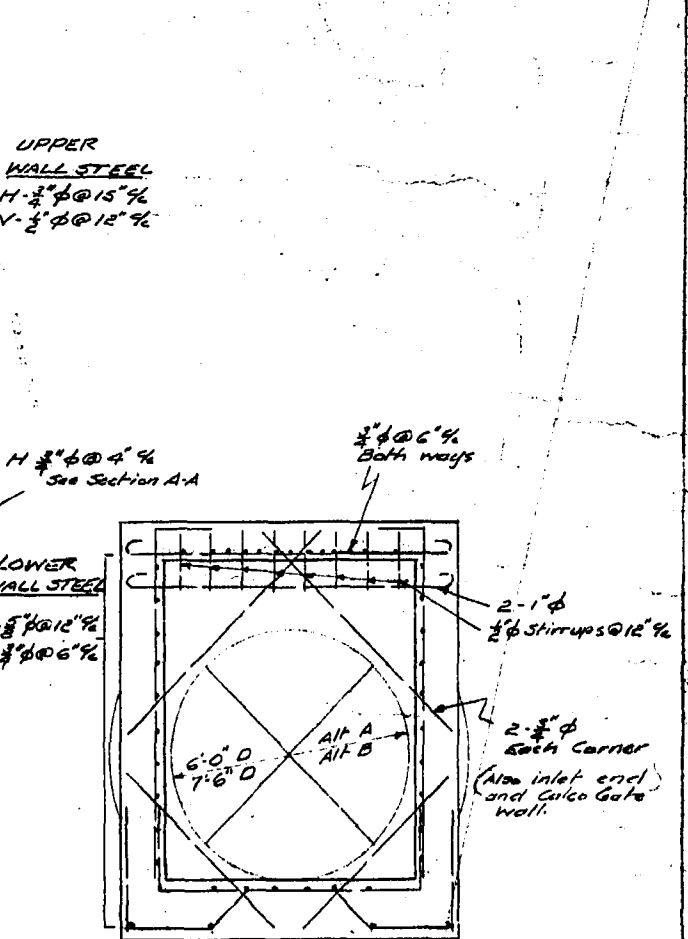
DETAIL K
Scale 1/4" = 1'-0"



SECTION E-E



SECTION F-F



SECTION G-G

SECTION U-U

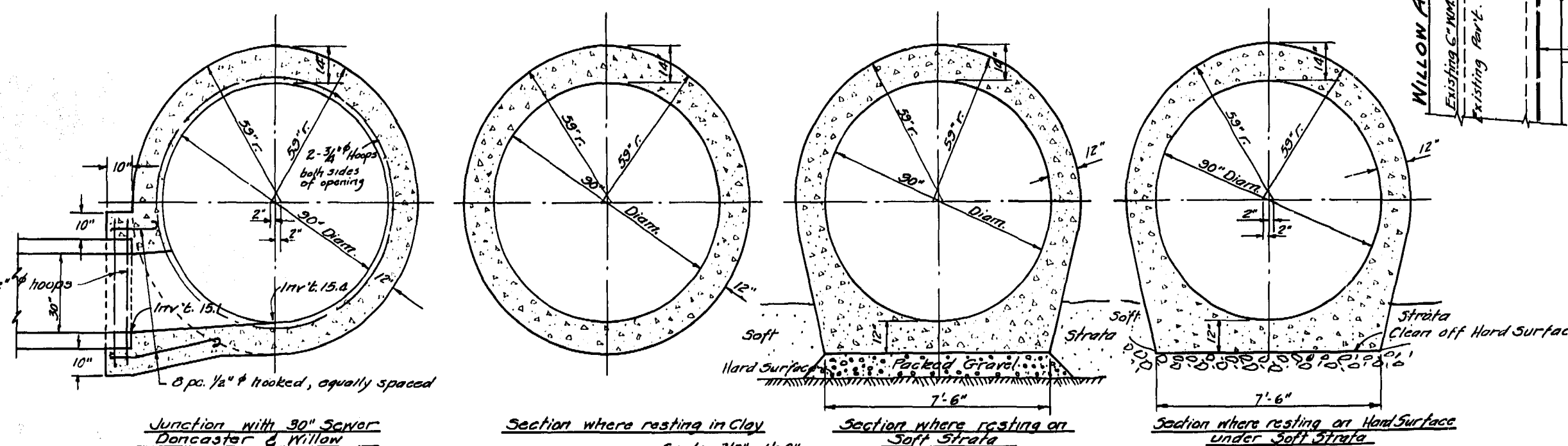
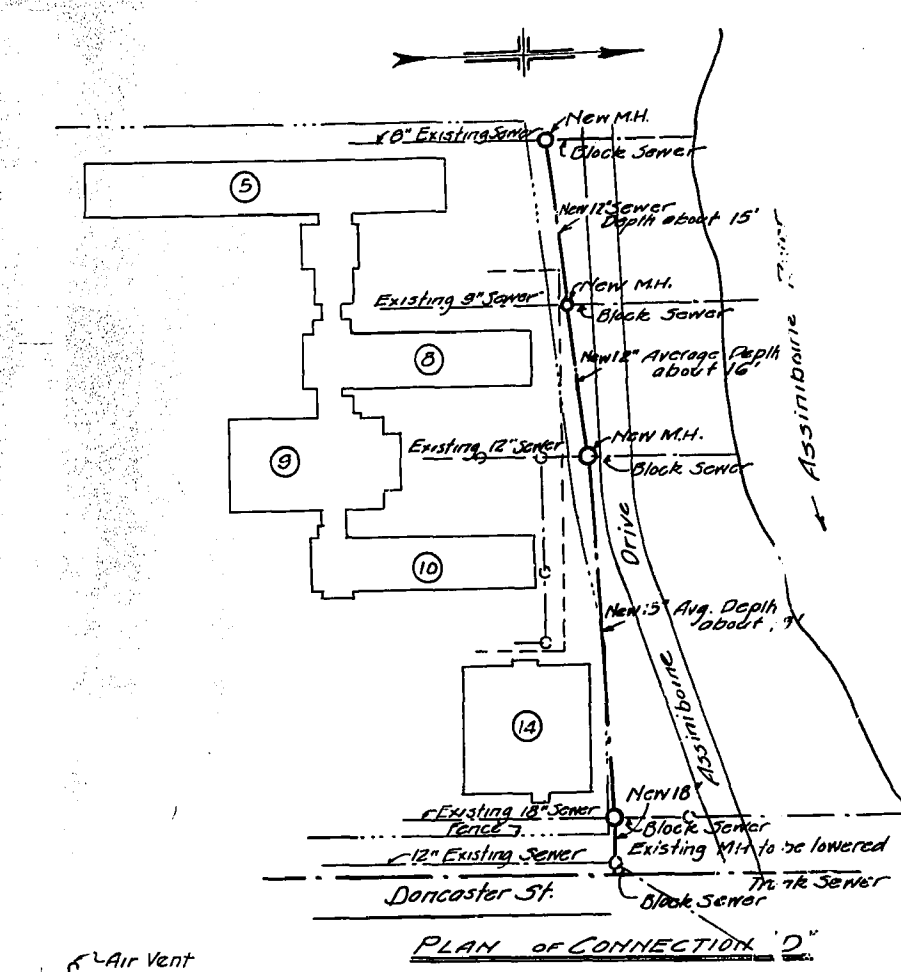
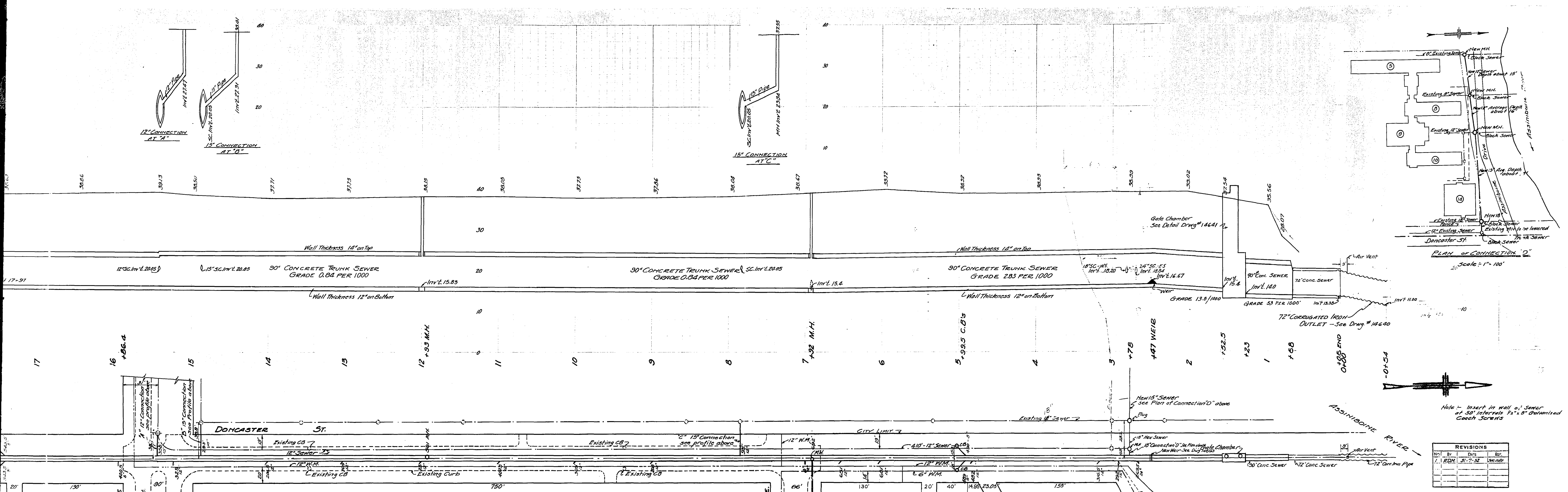


SECTION T-T

DETAILS OF CONCRETE GATE CHAMBER FOR DONCASTER ST TRUNK SEWER ALTERNATES A & B

CITY OF WINNIPEG
ENGINEERING DEPARTMENT
W. D. HURST, CITY ENGINEER
A. J. S. TAUNTON, DEPUTY CITY ENGINEER
DRAWN BY: H.B.V. DATE: 12.26.52
TRACED BY: [Signature]
CHECKED BY: [Signature]
APPROVED BY: [Signature]
SCALE SHOWN: 1/4" = 1'-0"
DRAWING NO. 14671

ALT B ONLY TO BE BUILT #14641



REVISIONS			
NO.	BY	DATE	REASON
1.	R.D.M.	31-7-92	see note

Note - Revision #1
 Pipe size changed from 72" to 84" Corridor to Grant

REVISED AS CONSTRUCTED
 BY S.M. DATE 02-08-98
 CHECKED BY J.K. DATE 02-23-98

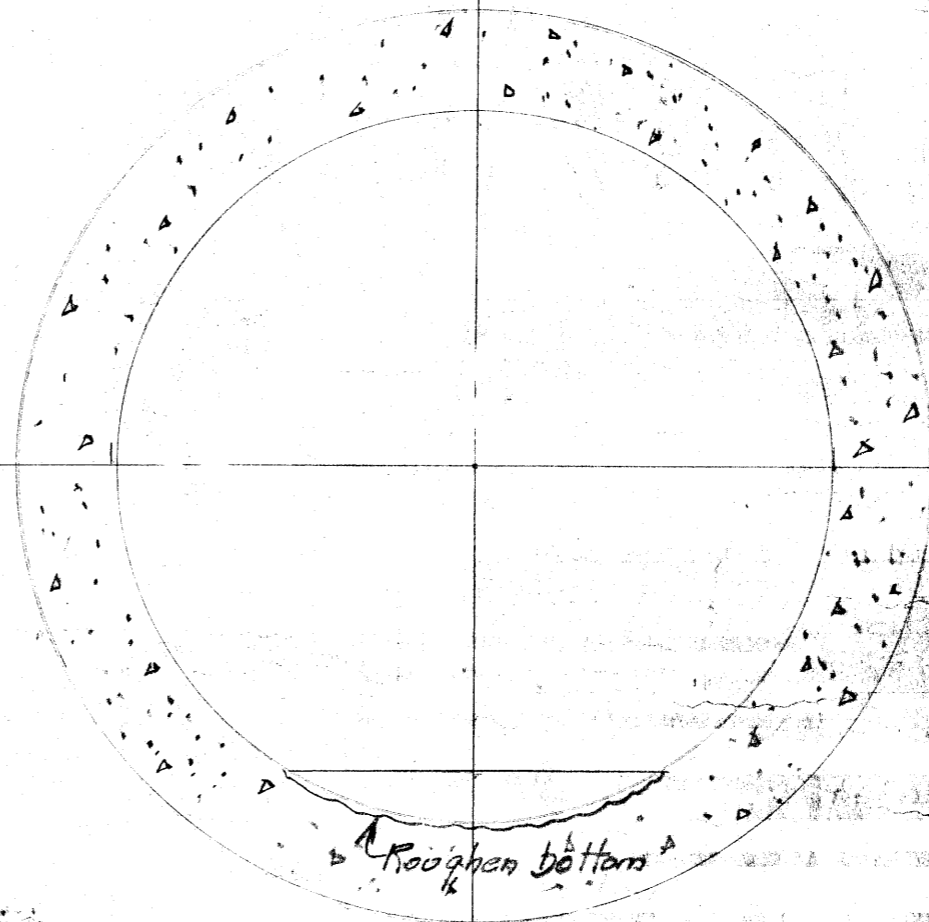
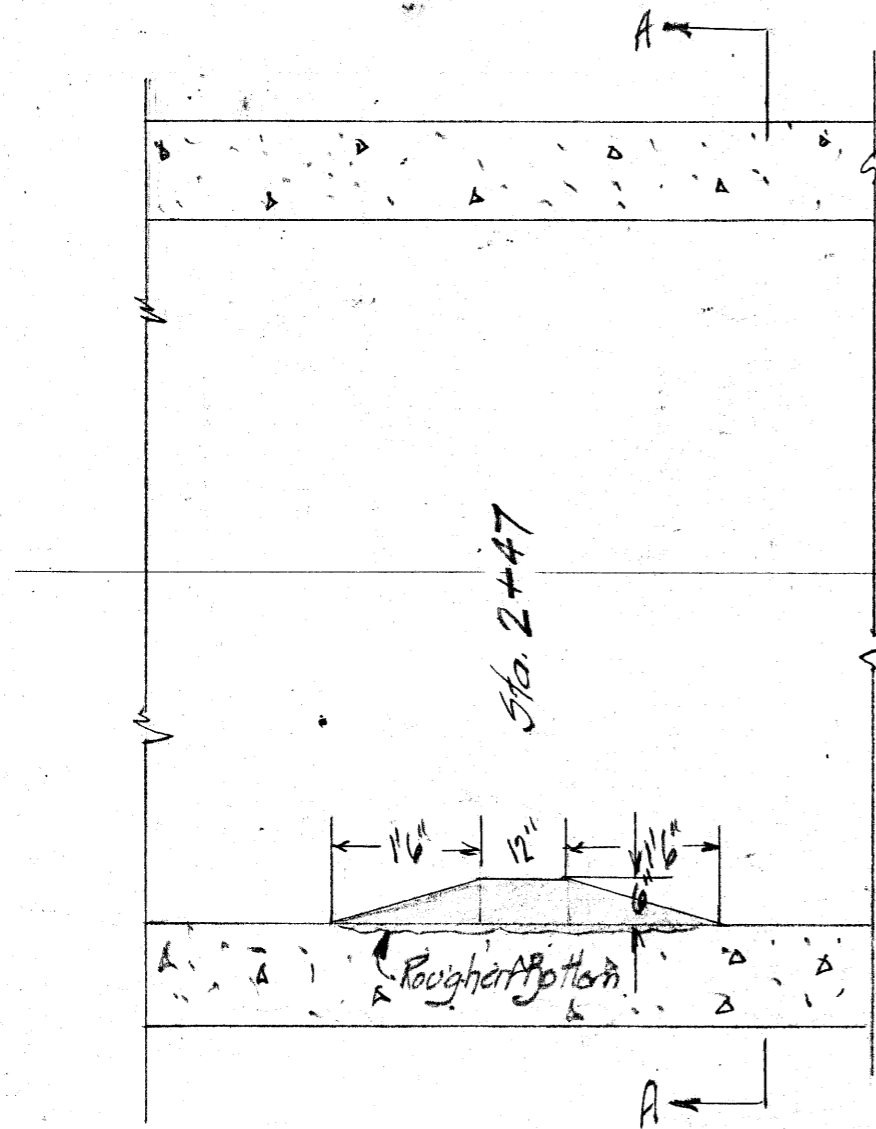
REVISED AS CONSTRUCTED
 BY J.L. DATE 04-15-98
 CHECKED BY J.L. DATE 02-11-97

CITY OF WINNIPEG
 ENGINEERING DEPARTMENT
 W. D. HURST CITY ENGINEER
 J. S. TAUNTON DEPUTY CITY ENGINEER

TITLE: PLAN & PROFILE OF TRUNK SEWER IN DONCASTER ST. FROM ASSINIBOINE RIVER TO THE WESTERLY PROJECTION OF THE SOUTH LINE OF GRANT 1 VE. ALTERNATE B-72" & B-30" SEWER

DESIGNED BY: R.R. MURPHY DATE: 1-2-52
 CHECKED BY: J.L. DATE: 12-1-57

606 p.55, 648 p.58, 646 p.24
 1" = 40' HOR. 1" = 8' VER. 4639



Section A-A

14693

Weir in
Dorchester Sewer.

CITY OF WINNIPEG
ENGINEERING DEPARTMENT
C. B. HURST CITY ENGINEER
S. S. TAYLOR

DRAWN BY *W.B.* DATE *Mar. 9. 53*
TRACED BY
CHECKED BY *J.M.*
APPROVED *W.A.H.*

SCALE
1/2" = 1 foot
DRAWING NO.
14693

14693